

Housing

Rugged two piece die cast aluminum casting with decorative banding. Held together utilizing 4 stainless steel fasteners. For down-light and up-light accent applications.

Reflector

Specular hammer tone anodized aluminum reflector.

Lens / Frame

Die cast aluminum hinged frame held captive with 2 stainless steel fasteners. Impact and thermal-shock resistant tempered safety glass lens encased with heavy silicone gasketing on both top and bottom.

Electrical

High power factor electronic ballasts rated to -30 Deg C (-20 Deg F). 4 KV rated porcelain ceramic double end spring loaded Rx7s lamp holders.

Finish

Rugged, long life, oven baked polyester powder coatings utilizing multi-stage pre-treatment for outstanding adhesion. Standard finish is bronze charcoal and white. Custom colors are available - consult factory -

Lamping

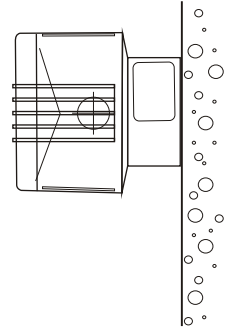
Horizontal burn position double ended 150w or 70w ceramic metal halide. RX7s base Lamp is included.

Warranty

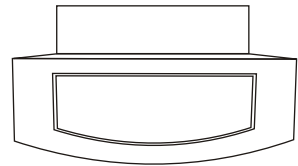
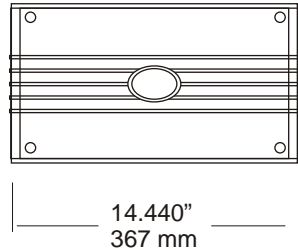
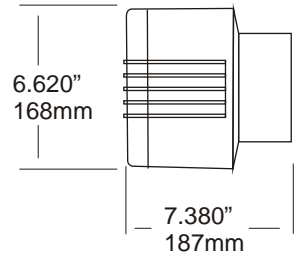
A three year warranty against defects in material and workmanship. Lamp and ballast and ballast components warranties are provided by manufacturer. All warranties are limited to replacement and/ or repair.

Wallbright UD

Uplight - Downlight
Wall Mount Luminaire



Listed for Wet Location



Pappi Lighting

www.pappilighting.com

Tel: 888-453-1139 Fax: 866-720-3015

Pappi Lighting reserves the right to make product changes without prior notification

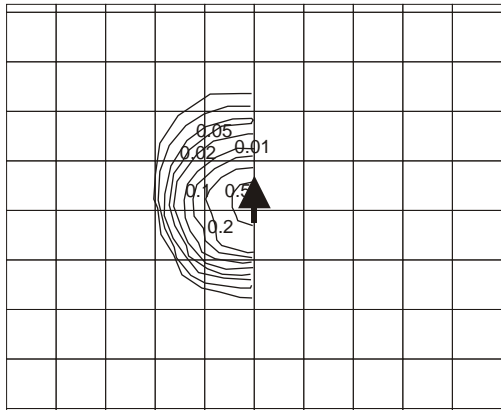
WBUD

150 MH
70 MH
Lamp

120,
Voltage

Color / Finish
Powder coat
White (WHI)
Bronze (BZS)
Charcoal (CBK)
Special (SPC)

ISO-ILLUMINANCE DIAGRAM (fc)



Mounting Height	Muliplier
10	2.25
15	1.00
20	0.56
25	0.36
30	0.25
35	0.18
40	0.14
45	0.11
50	0.09

Mounting Height = 15 ft. Each box represents one mounting height.

Lamp : 175w
Lumens: 14000
Tilt = none